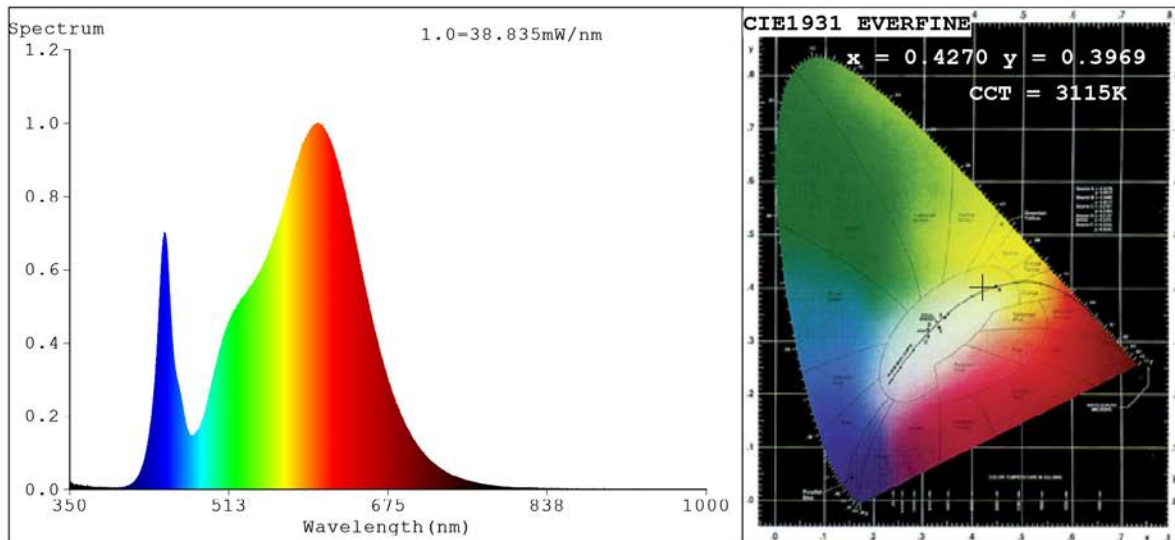


## Spectrum Test Report



### Color Parameters:

Chromaticity Coordinate:  $x=0.4270$   $y=0.3969$   $u'=0.2472$   $v'=0.5170$   
 CCT=3115K (Duv=-0.0015) Dominant WL:  $\lambda_d = 582.9nm$  Purity=47.3%  
 Ratio: R=22.3% G=75.2% B=2.5%; Peak WL:  $\lambda_p = 603.8nm$  FWHM=134.8nm  
 Render Index: Ra=82.9 CRI=77.5 TM30: Rf=81 Rg=98  
 R1 =81 R2 =90 R3 =96 R4 =82 R5 =82 R6 =88 R7 =83  
 R8 =61 R9 =8 R10=77 R11=83 R12=72 R13=83 R14=98 R15=74

### Photo Parameters:

Flux = 1932 lm Eff. : 131.46 lm/W Fe = 5.888 W

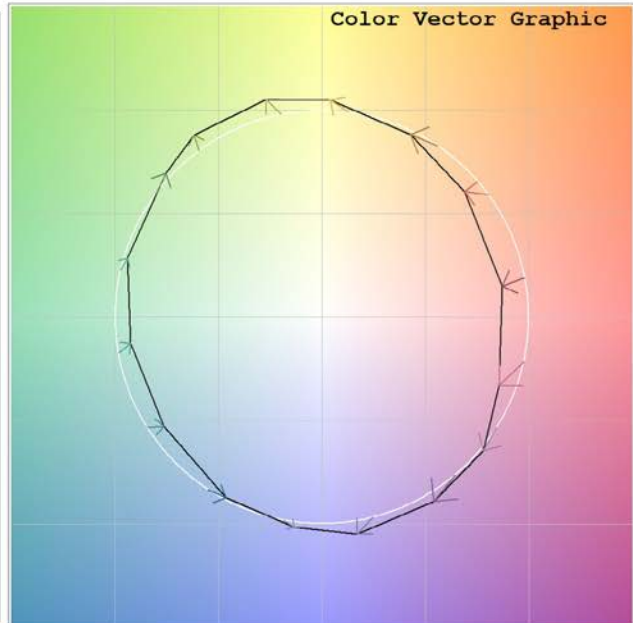
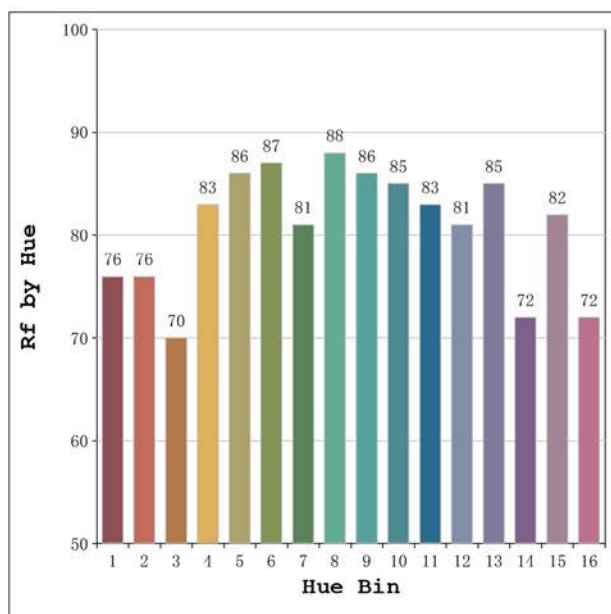
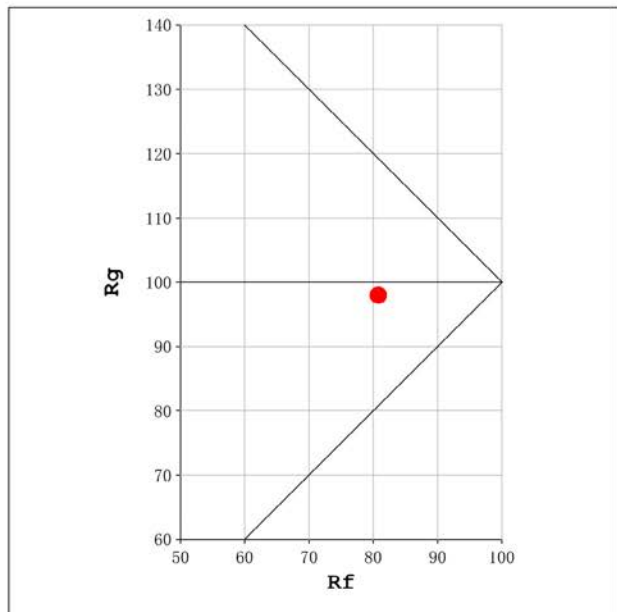
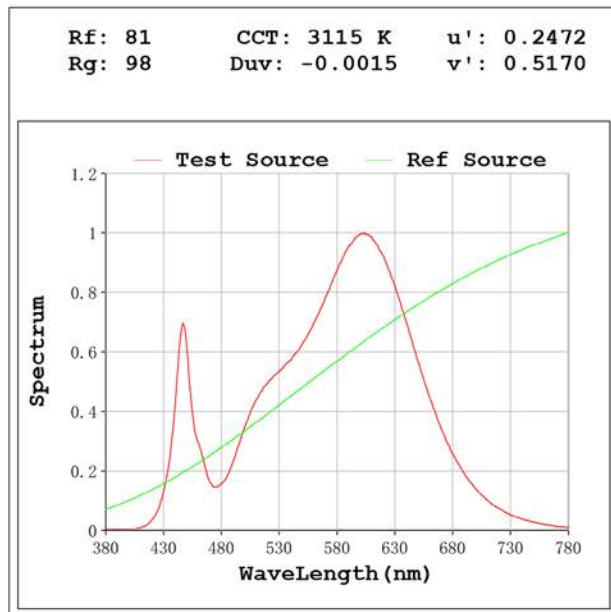
### Electrical parameters:

V = 23.998 V I = 0.6124 A P = 14.70 W PF = 1.000

Status: Integral T = 717 ms Ip = 55554 (85%)

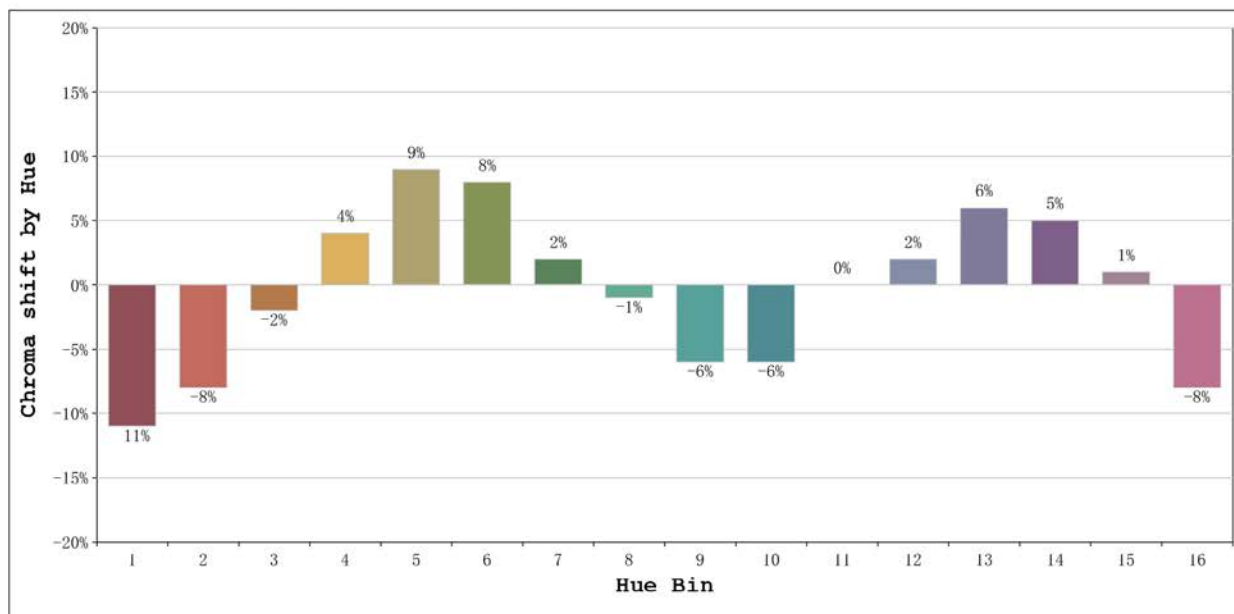
Model: Ecoled Élite 15 ip67  
 Tester: Sergio Carneros  
 Temperature: 27Deg  
 Manufacturer: Luz Negra S.L

Number: 31.159  
 Date: 2024-11-18 08:51:46  
 Humidity: 40%  
 Remarks: tira flexible de 100cm



Model:Ecoled Élite 15 ip67  
 Tester:Sergio Carneros  
 Temperature:27Deg  
 Manufacturer:Luz Negra S.L

Number: 31.159  
 Date:2024-11-18 08:51:46  
 Humidity:40%  
 Remarks:tira flexible de 100cm



			Graphic shift(%)	
Hue Bin	Hue Angle	Rf	Chroma	Hue
1	0.0° - 22.5°	76	-11	-1
2	22.5° - 45.0°	76	-8	8
3	45.0° - 67.5°	70	-2	14
4	67.5° - 90.0°	83	4	10
5	90.0° - 112.5°	86	9	6
6	112.5° - 135.0°	87	8	-1
7	135.0° - 157.5°	81	2	-9
8	157.5° - 180.0°	88	-1	-5
9	180.0° - 202.5°	86	-6	-2
10	202.5° - 225.0°	85	-6	4
11	225.0° - 247.5°	83	0	9
12	247.5° - 270.0°	81	2	6
13	270.0° - 292.5°	85	6	-8
14	292.5° - 315.0°	72	5	-15
15	315.0° - 337.5°	82	1	-12
16	337.5° - 360.0°	72	-8	-13

Model:Ecoled Élite 15 ip67  
 Tester:Sergio Carneros  
 Temperature:27Deg  
 Manufacturer:Luz Negra S.L

Number: 31.159  
 Date:2024-11-18 08:51:46  
 Humidity:40%  
 Remarks:tira flexible de 100cm